

RESOLUTION NO. 150

A RESOLUTION OF THE GOVERNING BOARD OF THE VALLEY REGIONAL FIRE AUTHORITY APPROVING AND ADOPTING A PERFORMANCE POLICY, PERFORMANCE MEASURES, AND PERFORMANCE OBJECTIVES AS OUTLINED IN RCW 52.33

WHEREAS, Valley Regional Fire Authority was legally established as a fire department on January 1, 2007 by the voters of the Cities of Algona, Auburn and Pacific to provide certain emergency medical, fire and rescue services; and

WHEREAS, Valley Regional Fire Authority has a mission statement and goals and objectives to guide the organization in providing fire and medical services to our community; and

WHEREAS, Valley Regional Fire Authority has a basic organizational structure which may include elected officials, Administration Personnel, Chief Officers, Firefighters, and EMT's; and

WHEREAS, Valley Regional Fire Authority has a certain number of members now and in the future who perform the tasks required to accomplish our response objectives; and

WHEREAS, Valley Regional Fire Authority is required by state law to establish turnout and response time goals (benchmarks) for the first arriving Basic Life Support, Advanced Life Support and Fire Engine responses to fire suppression calls and response time goals for a full alarm assignment (Effective Response Force, ERF) for Fire Engine responses to fire suppression calls; and

WHEREAS, Valley Regional Fire Authority has evaluated the elements identified in RCW 52.33 and included those provisions deemed appropriate in the Department's emergency service delivery; and

WHEREAS, Valley Regional Fire Authority has completed a Community Risk Analysis (CRA) and developed a written Standard of Cover required to comply with applicable provisions of RCW 52.33.

NOW, THEREFORE, THE GOVERNING BOARD OF THE VALLEY REGIONAL FIRE AUTHORITY HEREBY RESOLVES AS FOLLOWS:

Section 1. Purpose. The Valley Regional Fire Authority Governance Board hereby adopts the target response coverage document attached hereto as Exhibit 1 and incorporated herein by reference, as documented, as the Valley Regional Fire Authority official policy for determining emergency medical, fire, and rescue resource deployment. The attached response coverage document officially defines the Valley Regional Fire Authority written policies and procedures that establish the distribution and concentration of fixed and mobile resources of the department.

Section 2. Administrative Authorization. The Fire Chief/Administrator of the Authority, or designee, is hereby authorized to implement such administrative procedures as may be necessary to carry out this directive.

Section 3. Effective Date. This Resolution shall supersede VRFA Resolution #45 and be in full force upon passage and signatures hereon.

Section 4. By adopting this Resolution, the Valley Regional Fire Authority does not assume a duty of care to any particular person, or the public, to respond within the times set forth in Exhibit 1, or make any promise of specific treatment during any response.

DATED and SIGNED this 11<sup>th</sup> day of June, 2019.


VALLEY REGIONAL FIRE AUTHORITY

  
\_\_\_\_\_  
Leanne Guier  
Governing Board Chair

ATTEST:

  
\_\_\_\_\_  
Louise Bartol  
Clerk of the Board

APPROVED AS TO FORM:

  
\_\_\_\_\_  
Joseph F. Quinn  
Counsel for Valley Regional Fire Authority

RESOLUTION NO. 150  
EXHIBIT 1

**Valley Regional Fire Authority**  
RCW 35.103

The Valley Regional Fire Authority (VRFA) provides primary fire suppression and prevention, rescue and emergency medical services to the cities of Algona, Auburn, Pacific as well as mutual aid to the adjoining areas of King and Pierce County. The VRFA was approved by the voters in November of 2006 and began operations on January 1<sup>st</sup>, 2007. The VRFA is a full service fire authority that in 2019 served 90,000 citizens. The VRFA covers 37 square miles in King and Pierce Counties within Washington State.

The services provided by the VRFA include but are not limited to:

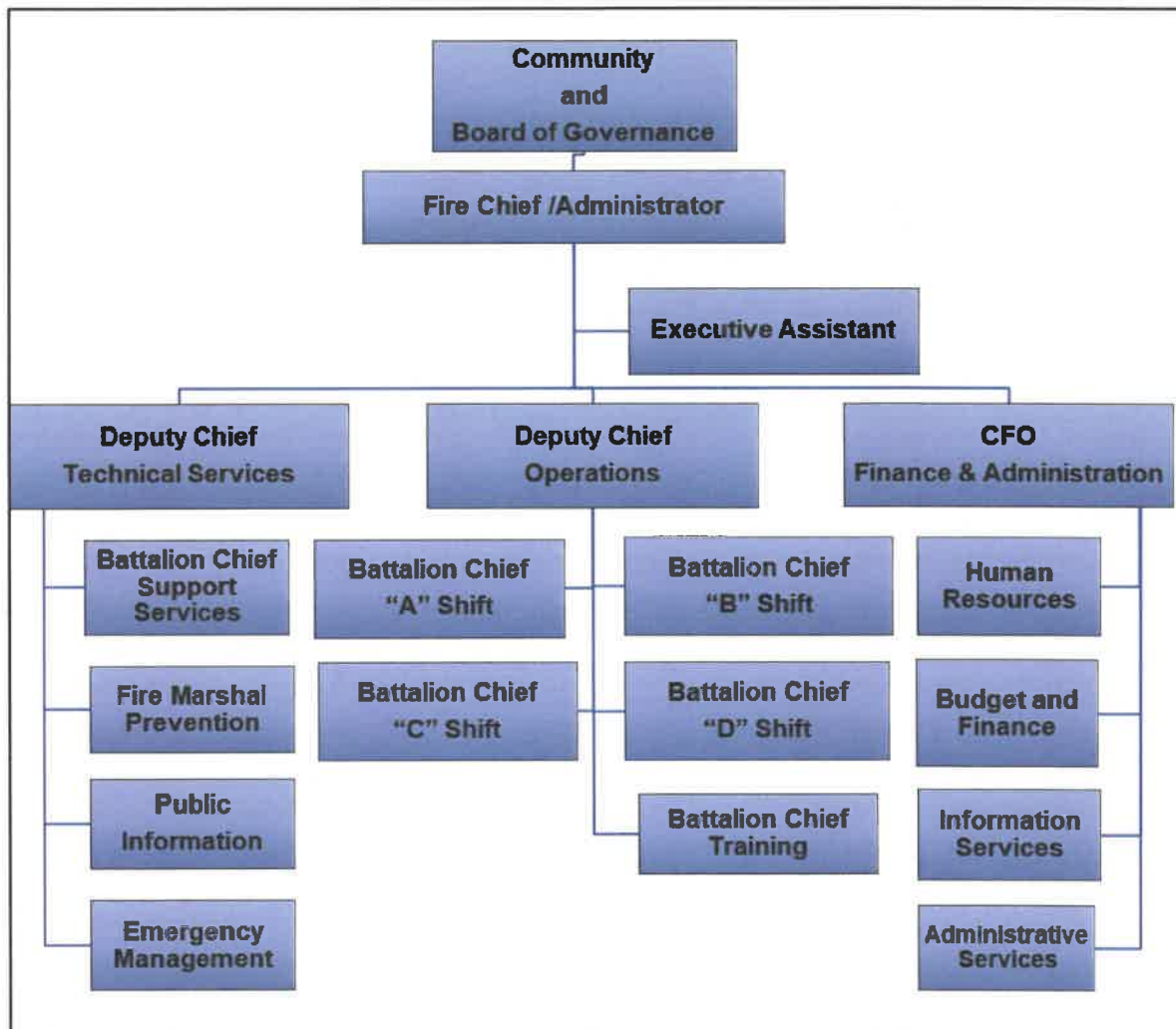
- a) Fire Suppression
- b) Basic Life Support and transport– E.M.T level
- c) Public Education and Information
- d) Fire Prevention / Fire Investigation
- e) Hazardous Materials\* (Haz/Mat)
- f) Disaster Response – Department Operations Center
- g) SCUBA and surface water rescue and high angle rope rescue\*

\* The VRFA participates in a regional response model to Haz/Mat and technical rescue by providing SCUBA, surface water, high angle rope rescue and Haz/Mat technicians to a coalition of South King County and North Pierce County agencies in exchange for joint support in Haz/Mat, Confined Space and Trench Rescue disciplines.

The VRFA operates under an organizational structure which has been established by the elected officials from the cities that sit on the VRFA Governance Board. The organizational chart for the VRFA is exhibited below.

RESOLUTION NO. 150  
EXHIBIT 1

Valley Regional Fire Authority Organizational Chart - 2019



There are currently 126 personnel:

|                                       |                   |
|---------------------------------------|-------------------|
| Administrator/Fire Chief              | 1                 |
| Deputy Chiefs                         | 2                 |
| Administrative Support                | 13                |
| Career Firefighters                   | 98                |
| Fire Marshal's Office                 | 7                 |
| Public Education/Information Officers | 2                 |
| Training Division Staff               | 3                 |
| <b>Total:</b>                         | <b><u>126</u></b> |

RESOLUTION NO. 150  
EXHIBIT 1

The functions or services provided by the Valley Regional Fire Authority include the following:

- Emergency response to fires and medical aid emergencies.
- Non-emergent response to situations that may threaten property or the environment.
- Emergency response to all motor vehicle accidents requiring rescue, emergency medical care, fire suppression or pose an environmental threat.
- Mutual aid and automatic aid with neighboring jurisdictions.
- Fire Safety and disaster preparedness training in area schools.
- Fire and life safety building inspections.
- Emergency management and preparedness support with our partner cities, King and Pierce County, and Washington State Specialized Rescue services as part of the regional rescue team coalition.
- Investigation of fire origin and cause.
- Hazardous Materials identification and mitigation.

**Response Time Standards:**

The VRFA defines reliability as the system's ability to consistently deliver services within baseline performance expectations. Specifically, if the VRFA's target benchmark performance remains consistent (based on the percentage of time that the benchmark performance is achieved) - from year to year, the system is reliable. If the target benchmark performance improves, the success percentage increases, then the system becomes more reliable. If performance declines, success percentage decreases, then the system becomes less reliable. The purpose of identifying benchmark targets is to improve response time performance.

RCW 35.103 mandates every fire protection district and regional fire protection authority, in order to measure the ability to arrive and conduct mitigation operations before the critical events of brain death or flash-over, shall establish time objectives for the following measurements:

**Alarm Processing Time**

Alarm processing time is the measurement from the time the 911 call is first received at the Public Service Answering Point (PSAP) to the time of alarm notification to emergency responders.

**Turnout Time**

Turnout time is the measurement of time from alarm notification to wheels turning as the unit moves to begin its response (enroute).

RESOLUTION NO. 150  
EXHIBIT 1

**Travel Time**

Travel time is the measurement from the beginning of the response (enroute) to the unit stopping and arriving at the proper location (on-scene).

**Effective Response Force (ERF) Travel Time**

ERF travel time is the amount of time that it takes for the minimum number of firefighters to arrive (enroute to on-scene) within a maximum prescribed time.

**Total Response Time (TRT)**

Total response time is a measurement of the time it takes from the alarm being received at PSAP to the unit arriving on-scene.

**ERF TRT**

ERF TRT is the measurement of the time it takes from the alarm being received at PSAP to the minimum number of firefighters arriving on-scene.

Below are the target benchmarks adopted by the VRFA for EMS, Fire and Hazmat. *(Technical Rescue target benchmarks are not included in the performance standard due to the high percentage of responses that are outside the VRFA's primary response area, largely due to the regional response model).*

**VRFA Target Benchmark EMS:**

- Turnout Time - 1:30
- 1<sup>st</sup> Unit Travel Time - 5:00
- First Unit TRT - 7:34
- ERF Travel Time - 5:30
- ERF TRT - 8:04

**VRFA Target Benchmark Fire Suppression:**

- Turnout Time - 1:45
- 1<sup>st</sup> Unit Travel Time - 5:00
- 1<sup>st</sup> Unit TRT - 7:49
- ERF Travel - 5:45
- ERF TRT - 8:34

RESOLUTION NO. 150  
EXHIBIT 1

VRFA Target Benchmarks for HazMat:

- Turnout Time - 1:45
- 1<sup>st</sup> Unit Travel Time - 5:00
- 1<sup>st</sup> Unit TRT - 7:49
- ERF Travel Time - 6:45
- ERF TRT - 9:34

The Valley Regional Fire Authority does not provide ALS responses. ALS is provided by a third service provider - King County Medic One.